

# **TV Vision**

**PCI TV Tuner with Video Capture**

User Manual



---

## Read This First

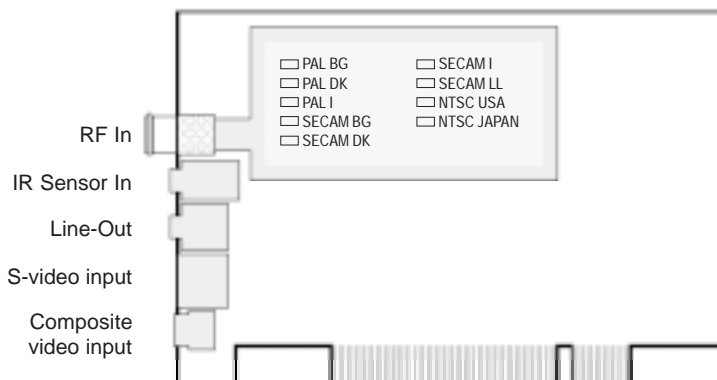
The TV Vision PV951 combines the function of a TV Tuner card and video capture card into one PCI board. It virtually transforms your PC into a television set with the Infra-Red remote controller.

The Teletext function (for PAL system only) comprises:

- a. Display multiple Teletext windows for different pages
- b. View as many Teletext screens as required
- c. View all the information simultaneously

The PV951 allows real-time video capture capability to support video-conferencing applications such as Microsoft Netmeeting. Two types of video input are supported: S-video and composite video.

The following describes the board layout and external connectors of the TV Vision PV951 PCI card:



---

## Minimum System Requirements

The following minimum requirements are needed to use the TV Vision PV951 as a TV tuner card:

- Pentium class CPU
- 16MB RAM
- CD-ROM drive
- Active speaker
- VGA card and monitor
- Microsoft Windows 95, Windows 98

If you also intend to use the TV Vision PV951 for video conferencing, the followings are required:

- 28.8kbps modem
- Desktop PC camera
- Full-duplex sound card
- Microphone
- Speakers
- Video conferencing software (e.g. Microsoft NetMeeting)

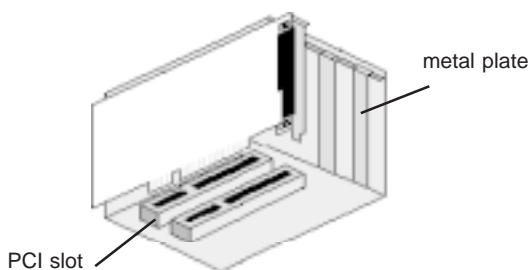
---

## Hardware Installation

This chapter describes how to install the TV Vision PV951 into your system and connection to various external devices.

To install the TV Vision PV951 card into the system:

1. Switch off your system and all peripheral devices.
2. Leave the power cable connected to the grounded outlet so that your system is grounded.
3. Touch a metal plate on your system to ground yourself and discharge any static electricity that might damage the components on the board.
4. Remove the cover from your system.
5. Locate a free PCI slot in your system.
6. Remove the metal plate from the slot you have chosen and put the screws aside.
7. Align the gold fingers on the board with the vacant expansion slot and gently lower the board into the slot.

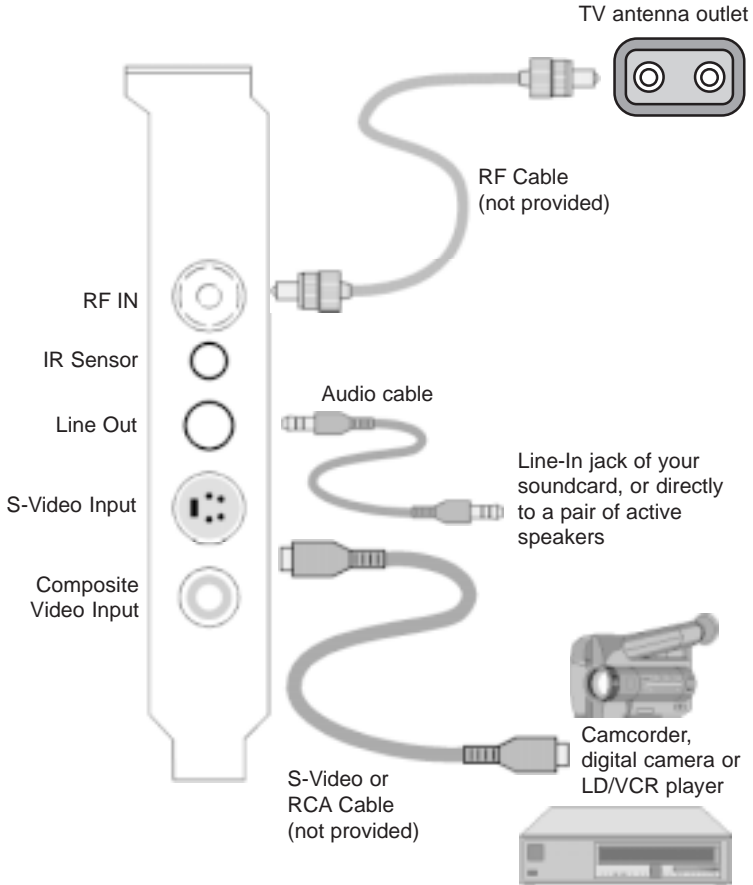


8. Secure the board to the expansion slot with the screws you have removed from the metal plate.
9. Replace the cover of your system and switch it on.

---

## Connecting to External Devices

The following depicts how to connect the TV Vision PV951 to various external devices:



---

## Software Installation

This chapter guides you through the installation of the TV Vision PV951 under Microsoft Windows 95/98 environment.

The various version of Windows 95/98 will display different dialog boxes during installation. This manual assumes that you are using Windows 98.

1. Upon starting the system for the first time after inserting the TV Vision PV951 PCI card, Windows will notify that it has detected *PCI Multimedia Video Device* as shown below:



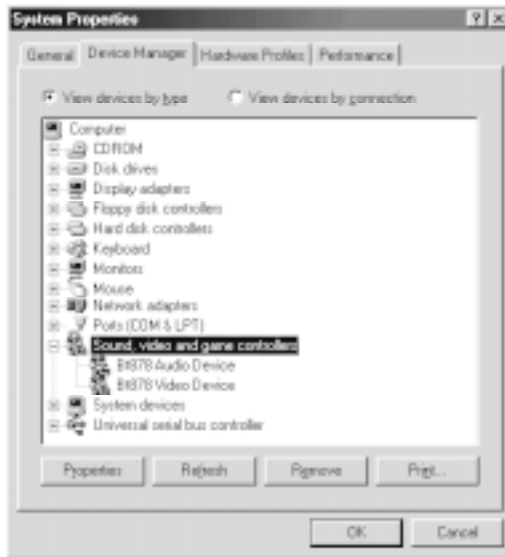
Click **Next**.

2. In the next dialog box, select *Search for the best driver for your device. (Recommended)* and click **Next**.
3. Select CD-ROM drive to install directly from **E:** drive or select *Specify a location:* and **Browse...** to **E:\** (where **E:** is your CD-ROM drive).

4. Click **Next** when Windows report that the ***BT878 Video Device*** is detected.
5. Next, click **Finish** to complete the driver installation and reboot your system when prompted.

It is advisable to perform the followings after rebooting to check on the driver installation:

1. Click on the **START** button from the task-bar.
2. Select **Settings** and click on **Control Panel**.
3. Double-click on the **System** icon to bring up the **System Properties** dialog box.
4. Next, click on the **Device Manager** tab.
5. Double-click on **Sound, video and game controllers** as shown below:



Note: You should not see any exclamation mark next to *BT878 Audio Device* or *BT878 Video Device*.

---

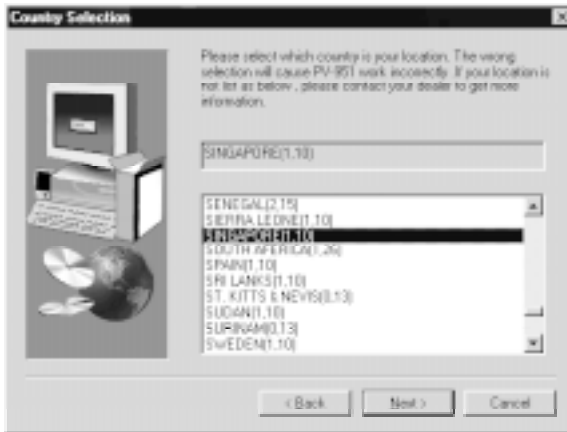
## Installing TV Tuner Application

To install the TV Tuner application:

1. Insert the *TV Vision Installation CD* into the CD-ROM drive.
2. When the autorun screen appears, click on the **Install TV Tuner Application** button.

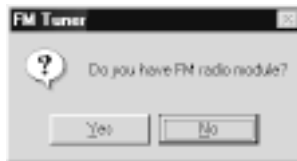
Note: If the autorun feature is disabled in your system, you may install the TV Tuner application manually by running the file SETUP.EXE from the CD.

3. Click **Next** when the **Welcome** dialog box appears.
4. Next, select the country you are located at when the **Country Selection** dialog box appears as shown below:



Click **Next** to continue.

5. Click **No** when the **FM Tuner** dialog box appears as shown:

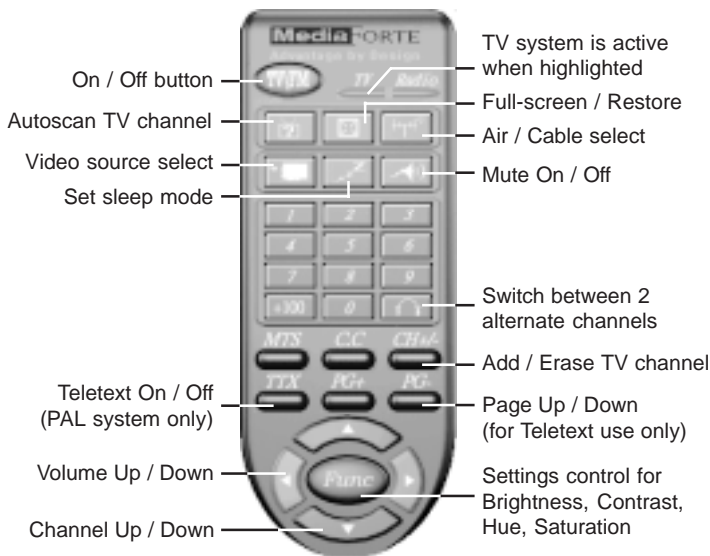


6. Click **Next** to install the application in the default location on the harddisk.
7. Click **Next** again to create the program folder in Windows.
8. The next dialog box displays a summary of the installation settings. Click **Next** to begin installation.
9. Reboot your system when prompted after the installation is completed.

## TV Tuner Control Panel

Upon installing TV tuner application, the TV tuner icon will appear at the bottom right-hand corner of the task-bar. You may launch the application either by double-clicking on the icon or by pressing the **POWER** button on the remote controller.

The following describes the function of the various buttons on the TV tuner control panel:



---

## Trouble Shooting

This chapter describes briefly some of the basic trouble-shooting tips to help resolve some of the problems encountered when using the TV Vision PV951 PCI TV tuner card.

### **How do I record my favourite TV program using this product?**

Firstly, you must tune in to the TV channel from which you want to record. Press **CTRL+M** to start recording. The TV program is recorded into AVI format onto the harddisk. The default filename is *CAPTURE.AVI* and it is located at the *PV-951* directory in the *Program Files* folder.

To stop the recording, just click on any button on your mouse. Ensure that you have sufficient free harddisk space to record the program.

### **Why is it that the TV program which I have recorded do not have any sound at all?**

In order to allow recording of audio from the TV program, you would need to have a sound card installed in the computer. Otherwise, the AVI file will only contain the video clip.

### **The video display is unstable. What's wrong?**

Check that you are using the correct video format, e.g. NTSC, PAL, or SECAM. You may also check the incoming video signal on another receiver (e.g. TV set) to verify whether it is caused by poor reception.

### There is no video on the TV display window. Why?

There are several possibilities to this problem. Check that

- a. the video connectors are securely plugged into the correct jacks,
- b. the RF cable is properly connected to the TV antenna outlet,
- c. you have selected the correct input for the video source device (CATV, Composite Video or S-Video),

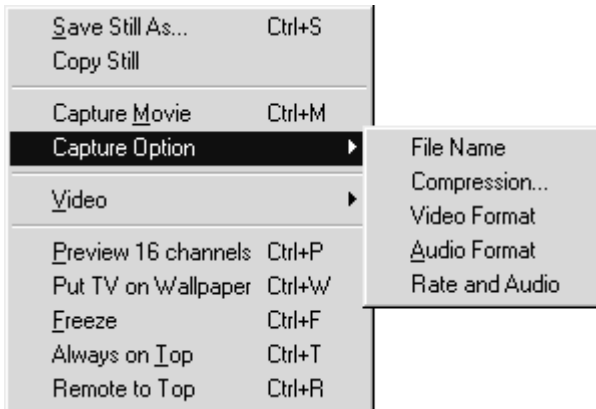
### I can see the TV program but there is no sound. Why?

There are several possibilities to this problem. Check that

- a. the Mute setting is not enabled,
- b. you have a pair of active speakers connected to the Line Out jack (ensure that the speakers are switched on),
- c. click on the volume control icon (from the task-bar) and ensure that the Line-In option is not muted if the audio output is connected a soundcard,

### Can I change the settings for recording of TV programs?

Yes, right-click on the TV display window to bring up the following menu:



Click on **Capture Option** as shown to select one of the followings settings to change:

<b>File Name</b>	Set the filename and location of the AVI file for recording
<b>Compression</b>	Select the video compression algorithm
<b>Video Format</b>	Set the size of the video capture and select the image output format
<b>Audio Format</b>	Set the audio recording properties
<b>Rate and Audio</b>	Set the capture rate for video recording (up to 30 frames per second) and to enable/disable audio recording

### The video display of the TV program is not smooth. Why?

You could be in Preview mode. Setting to Overlay mode would improve the performance.

Right-click on the TV display and select **Video**. Next, select **Video Mode** and click **Overlay**.

### Why do I get the "Init DLL error!" error message?

This error message means that the software cannot detect the presence of the TV Vision PV951 PCI card in the system. Either the card is not properly inserted into the PCI slot or it is conflicting with another device in the system.

Refer to page 1 of Chapter 2 on the hardware installation to properly install the TV Vision PV951 PCI card into the computer. If the problem persists, check for conflict.

1. Click on the **START** button from the task-bar.
2. Select **Settings** and click on **Control Panel**.
3. Double-click on the **System** icon to bring up the **System Properties** dialog box.
4. Next, click on the **Device Manager** tab.

5. Double-click on **Sound, video and game controllers** as shown below:



Note: You should not see any exclamation mark next to *BT878 Audio Device* or *BT878 Video Device*.

If an exclamation mark appears next to any of the devices mentioned above, perform the following tasks:

1. Select the conflicting driver as indicated by an exclamation mark (!) and click on the **Properties** button.
2. In the Properties dialog box, click on the **Resources** tab.
3. Unselect the check box for **Use Automatic Setting**.
4. Next, select different **Basic configuration** or click on the **Conflict Resource type** and then click on **Change setting**.
5. Select different value using the up or down arrow until the conflict information box indicates **No devices are conflicting** and then click **OK**.
6. Click **OK** when prompted to restart the system.



Part Number: MAN-PV951

Printed in Singapore